

# “Butt splice” compression connectors, KL type

## FEATURES & BENEFITS

- connector Cu, with galvanic tin plating, to make “butt splice” cable connections
- central stamping guarantees correct length of conductor insertion

## MECHANICAL DATA

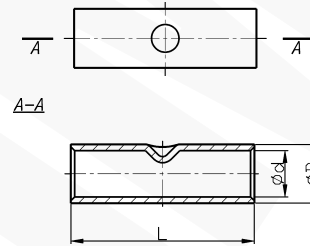
Material	Cu
Covering	tin-plated

## CRIMPING SHAPE

Number of crimping - narrow	1-1
-----------------------------	-----

## CERTIFICATES & STANDARDS

Technical approval	PRS TE/2241/880567/19
Design	standard



Type	Index Ergom	Cross-section [mm <sup>2</sup> ]	L	d	D	Quantity in package [pcs]	Weight [kg]	
KL 0,75-12 (100 PCS)	E11KM-01060100100	0,5÷0,75	12	1,3	2,8	100	0,07	
KL 0,75-12 (25 PCS)	E11KM-01060100102					25	0,02	
KL 1,5-15 (100 PCS)	E11KM-01060100200	1÷1,5	15	1,8	3,3	100	0,08	
KL 1,5-15 (25 PCS)	E11KM-01060100202					25	0,02	
KL 1,5-20 (100 PCS)	E11KM-01060100300		20				100	0,11
KL 1,5-20 (25 PCS)	E11KM-01060100302						25	0,03
KL 2,5-15 (100 PCS)	E11KM-01060100400	2,5	15	2,3	4,2	100	0,11	
KL 2,5-15 (25 PCS)	E11KM-01060100402					25	0,03	
KL 2,5-20 (100 PCS)	E11KM-01060100500		20				100	0,18
KL 2,5-20 (25 PCS)	E11KM-01060100502						25	0,05
KL 4-15 (100 PCS)	E11KM-01060100600	4	15	3	5	100	0,17	
KL 4-15 (25 PCS)	E11KM-01060100602					25	0,05	
KL 4-20 (100 PCS)	E11KM-01060100650		20				100	0,23
KL 4-20 (25 PCS)	E11KM-01060100652						25	0,06
KL 6-20 (100 PCS)	E11KM-01060100700	6	20	4	6	100	0,28	
KL 6-20 (25 PCS)	E11KM-01060100702					25	0,08	
KL 6-25 (100 PCS)	E11KM-01060100800		25				100	0,3
KL 6-25 (25 PCS)	E11KM-01060100802						25	0,1